

BICYCLE AND PEDESTRIAN MASTER PLAN

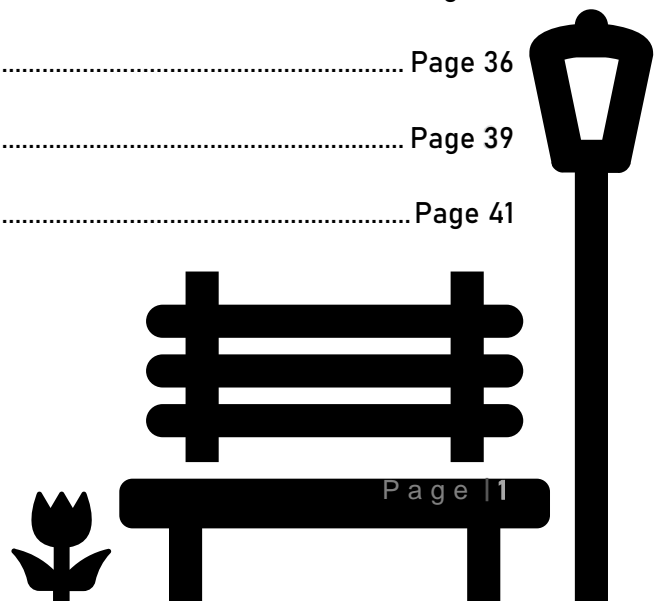


THE VILLAGE OF PONTTOON BEACH

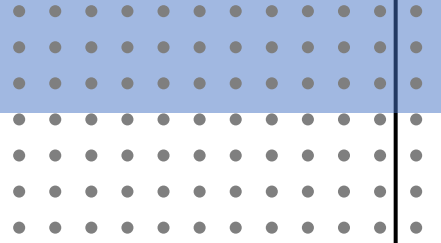


TABLE OF CONTENTS

1	INTRODUCTION EXECUTIVE SUMMARY	Page 4
1.1	Village Transition Plan.....	Page 6
1.2	Planning Goals	Page 7
1.3	Plan Objectives	Page 8
1.4	Planning Documents	Page 9
2	EXISTING FACILITY NETWORK	Page 10
2.1	Currently Planned Bicycle Facility Upgrades.....	Page 12
	A. Joint-Use Trail Along Lake Drive from Pontoon Road to the MCT Nature Trail	
	B. MCT Schoolhouse Trail - Overpass at Illinois Route 111	
3	COMMUNITY POINTS OF INTEREST	Page 13
3.1	Madison County Transit District Interconnections.....	Page 16
3.2	Horseshoe Lake State Park.....	Page 18
3.3	Randall D. Dalton Veterans Memorial Park.....	Page 19
3.4	Long Lake Park.....	Page 20
3.5	Retail Centers within the Corporate Boundary.....	Page 21
3.6	Granite City School District Educational Facilities	Page 22
3.7	Granite City Legacy Golf Course (18 Hole)	Page 23
4	EVALUATION CRITERIA	Page 26
4.1	Evaluation Matrix.....	Page 27
4.2	Evaluation Results.....	Page 30
5	SOCIAL MEDIA SURVEY RESULTS	Page 31
6	SURVEY SUMMARY	Page 35
7	FUTURE PLANS AND RECOMMENDATIONS	Page 36
8	POTENTIAL FUNDING SOURCES	Page 39
9	ACKNOWLEDGEMENTS	Page 41



FIGURES



1 MCT TRAIL Map..... Page 15

2 Evaluation Matrix of Potential Projects..... Page 25



APPENDICES

APPENDIX A - CONCEPTUAL PLANS

- A. Joint Use Trail Along Pontoon Road
- B. Bike Trail along Illinois Route 111
- C. Bike Trail within Emerald Meadows
- D. Joint-Use Trail Along Lake Drive from Pontoon Road to MCT Nature Trail
- E. Interconnection From Engineer's Road to West Chain of Rocks Road

APPENDIX B - OPINIONS OF PROBABLE CONSTRUCTION COSTS (PRIORITY ROUTES)

- A. Joint-Use Trail Along Pontoon Road
- B. Bike Trail along Illinois Route 111
- C. Bike Trail within Emerald Meadows
- D. Joint-Use Trail Along Lake Drive from Pontoon Road to MCT Nature Trail
- E. Interconnection From Engineer's Road to West Chain of Rocks Road

APPENDIX C - MEETING SIGN IN SHEET, COMMENTS, & PUBLIC MEETING

APPENDIX D - 2023 BICYCLE AND PEDESTRIAN MASTER PLAN MAP

APPENDIX E - 2023 BICYCLE & PEDESTRIAN MASTER PLAN SEGMENT MAP

APPENDIX F - OPINIONS OF PROBABLE CONSTRUCTION COST (ALL ROUTES)

- 1. Route Segment Details and Estimated Cost
- 2. Master Plan Signage
 - A. Sign Legend
 - B. Signs (White and Green)

APPENDIX G - VILLAGE OF PONTOON BEACH RESOLUTION





The Village of Pontoon Beach, Illinois “Bicycle and Pedestrian Master Plan” is a planning document which will help guide the Village efforts going forward to enhance the “Bedroom” community feel. The Village is going through an expansion of Industrial Park developments along the Northern and Eastern Boundary of the community.

The Village of Pontoon Beach was founded on December 8, 1962, as a community of cottages and clubhouses built along Long Lake. Based on the 2020 census, the Village of Pontoon Beach has a population of 5,280 people. The Village of Pontoon Beach is located approximated 15 miles northeast of downtown St. Louis, Missouri in Madison County, Illinois. The Village is in the heartland of the Midwest and is near St. Louis, Missouri and surrounding metropolitan areas. The Village has continued to develop as a residential community with a commercial component of industrial warehousing. The area has become a major Midwest distribution center and is anticipated to continue this growth in and adjacent to Pontoon Beach.

Pontoon Beach is uniquely located with an interstate transportation system which transects across the corporate boundary. A number of Interstate Highways bisect the community, including I-270, I-255, and I-55/I-70. This immediate access to the major highways along with an abundant supply of available land has spearheaded the recent development of industrial parks fronting along the interstate highway system.

In addition to the interstate highway network, the Village is also served by major railroad carriers which also transects the community. While the interstate highway system and major railroad carriers are an economic plus for the community, it also makes it difficult but not impossible to develop a coordinated bicycle and pedestrian trail system.

Madison County Transit (MCT) along with the Metro East Parks and Recreation District (MEPRD) have installed various bicycle trails which connect Pontoon Beach with



Trail facilities located throughout Madison County, Illinois. In addition to the existing trail system, the Village has established a priority in supporting our Veterans through the establishment of the Randall D. Dalton Veteran’s Park. This park is located near the Village Hall and is a destination for individuals who wish to share a moment remembering the sacrifice of those individuals within the community who have paid the ultimate price in support of our nation. The Village also recently established a second park located along Long Lake known as the Jamie Lynn Pagano Memorial Park.

From a tourism point of view, the Village has established itself as a place to enjoy good food and music with an annual music festival known as “Party at the Beach”. This music festival weekend brings in top named bands and draws thousands of people to attend this event annually.

The Village makes every attempt to make sidewalks throughout the community accessible to all its residents. If impacted by the Americans with Disabilities (ADA) the village makes improvements as funding becomes available. The proposed “Bicycle and Pedestrian Master Plan” is intended to assist Village board members in prioritizing the most cost to benefit bikeway segments and create a system which will provide more accessibility and connectivity to the existing class 1 trail network.

To facilitate this master planning document, the Village has investigated potential trail alignments both on street as well as off street alignments along with the associated costs. In addition, a social media survey was conducted to help obtain the public’s perspective of both the positive and negative points associated with the existing facilities within the Village. These results were shared with the Village Board for their information and input. After completing a preliminary investigation into a master planning document, The Village’s Planning and Zoning Committee was asked to develop a “short list” of the potential improvement projects. Upon completion of this “short list” the general public was invited to a presentation to facilitate their opinion and support to the Village master plan.

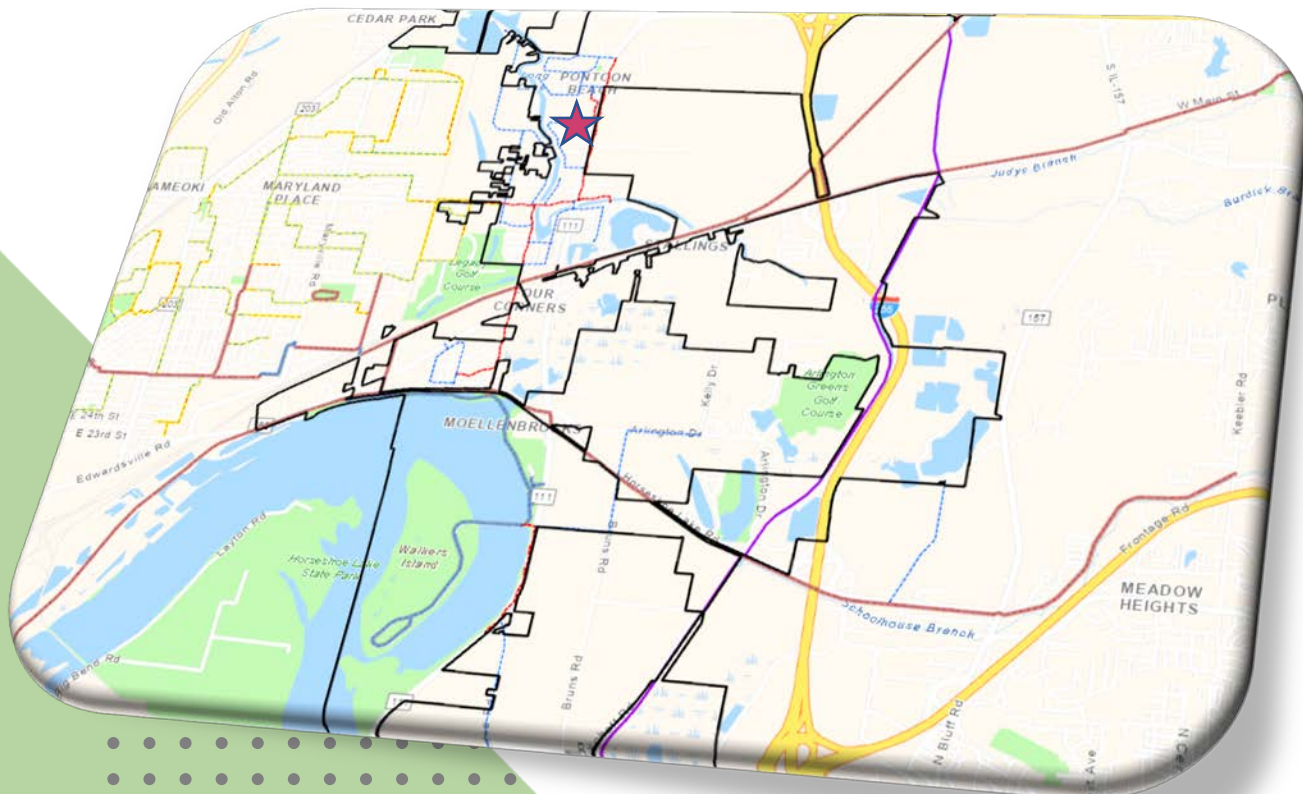
Upon completion of the Village planning commission and public meeting feedback has been used to develop a short term and long-range plan with prioritized projects to assist the Village Board in developing bicycle and pedestrian facilities in the future. This plan will also assist in the solicitation of grant opportunities which may present themselves both at the Village-State and Federal funding Levels.

In addition, as potential development occurs within the Village corporate boundary off street bicycle and pedestrian corridors can be retained.



1.1 Village Transition Plan

The Village of Pontoon Beach is a community that is expanding from its initial “Bedroom Community” to more of an industrial park region along the I-270 corridor. During this transition, the focus of the Village officials is developing an atmosphere more targeted to families and entertainment to revitalize the Village. The goal of the Village is to instill the life-long residency approach of years past by creating an atmosphere of community and family. Along with this transitioning the Village is aggressively pursuing new businesses to support this transitioned lifestyle.



1.2 Planning Goals

The goal of the Village is to create a source of connectivity between the different modes of transportation (pedestrian, bicycles, vehicles, etc.) within the community. In the process, the Village Board hopes to develop alternate access routes to the various village destination points.

In considering the alternate modes of transportation, the distinction between a walkable community and bicycle trails needs to be presented. The term “walkable” is defined in the following ways:

- (Of an area or route) suitable or safe for walking
- (Of a destination) close enough to be reached by walking
- Traditionally these routes have been determined to be sidewalks that were originally constructed within the residential corridors of the Village.

“**Bicycle Trails**” can be designed in many ways such as the following:

Class 1 Bikeways provides for bicycle travel on a paved right-of-way completely separated from any street or highway.

“**On-Street Bicycle Facility**” is defined as a street that accommodates both a bicyclist and a motorist. The synergy that the village wants to accomplish is two-fold.

First, the bicycle enthusiasts connection from the neighborhoods to the Class 1 Bikeways offered by MCT and MEPRD throughout Madison County.

Second, the connection of sidewalks and bicycle facilities to neighborhoods and destination points.

As these facilities are established, recreational activities will increase. This typically supports a more active lifestyle and is a significant component of advancing this transitioned lifestyle within the village.

The goal of this plan is to assist in the village transition as well as obtain a “buy in” to this program through village engagement of its residents and individuals doing business within the village.



1.3 Plan Objectives

The Village of Pontoon Beach is committed to creating synergy between the walkable community and the bicycle enthusiast to reach destination points within the village and surrounding communities.



The first objective to be obtained for the bicycle enthusiasts, is to provide the opportunity to travel along the MCT and MEPRD Bikeway Trails between the MCT "Nature Trail" and the MCT "Confluence Trail." This will allow access to the remaining trails created by MCT, MEPRD, SCCTD, and Trailnet on the Missouri side of the Mississippi River. Completing this connection point will enable the residents of Pontoon Beach and surrounding areas to reach destination points that are currently unattainable.

The second objective is to enhance the walkability within the village by creating safe routes as well as developing ADA accessibility corridors throughout the Village.

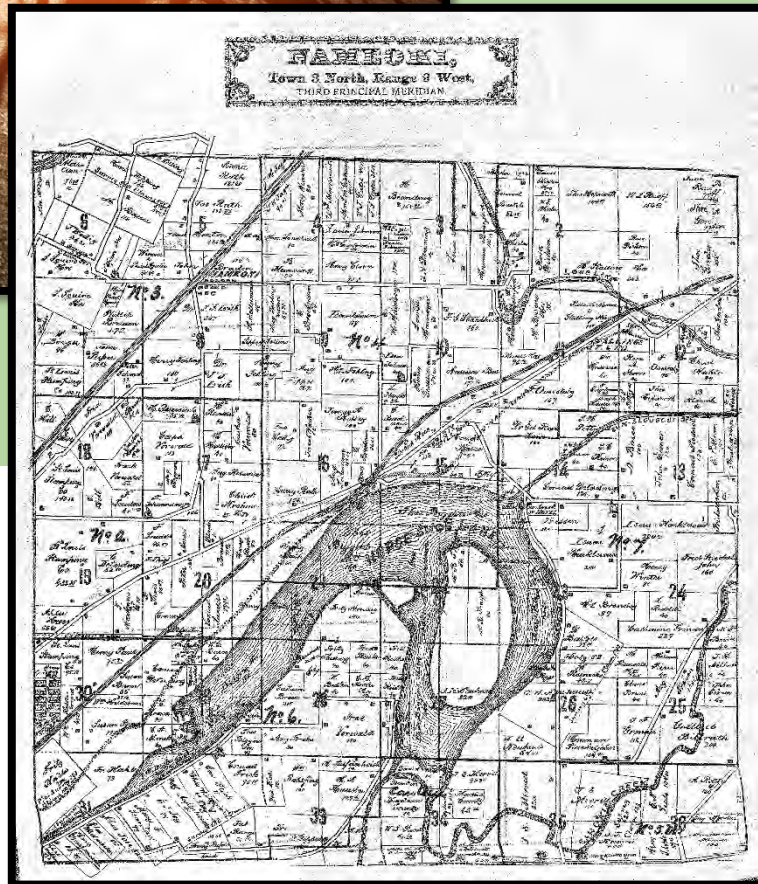
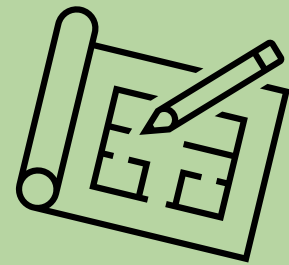
The final objective is to support the development of alternate modes of transportation within the village and surrounding communities.

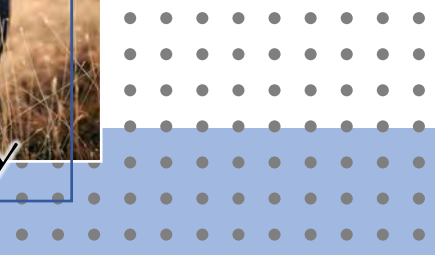


1.4 Planning Documents

The Bicycle and Pedestrian Master Plan will provide the Village of Pontoon Beach with an updated planning document that will have been approved by the Village Administration and will have the backing of the community. The plan will provide both a short-term plan, as well as a long-range plan, which can assist the Village in its efforts to enhance the "bedroom" community feel, while the Village industrial activities continue to expand. This plan will not only improve the lifestyle of those individuals living in the Village but also those individuals utilizing the destinations established within the Village of Pontoon Beach.

This master plan will also set the framework for applying for available grant opportunities which may present themselves both in the short and long term.





2



In considering the existing facility network of bicycle facilities within the Village it is important to note the relationship existing between the Village and MCT and MEPRD which is described as follows:

MCT NATURE TRAIL

MCT constructed the "Nature Trail" in 2003 which extends along the abandoned railroad right of way from Lake Drive to Mockingbird Lane. Also constructing an extension between the abandoned railroad corridor southerly to Horseshoe Lake, known as the Horseshoe Lake Junction. Two additional extension have been added to the MCT Nature Trail. These extensions were developed as the Six Mile Prairie Trail Phases 1 and 2.

MCT SCHOOLHOUSE TRAIL

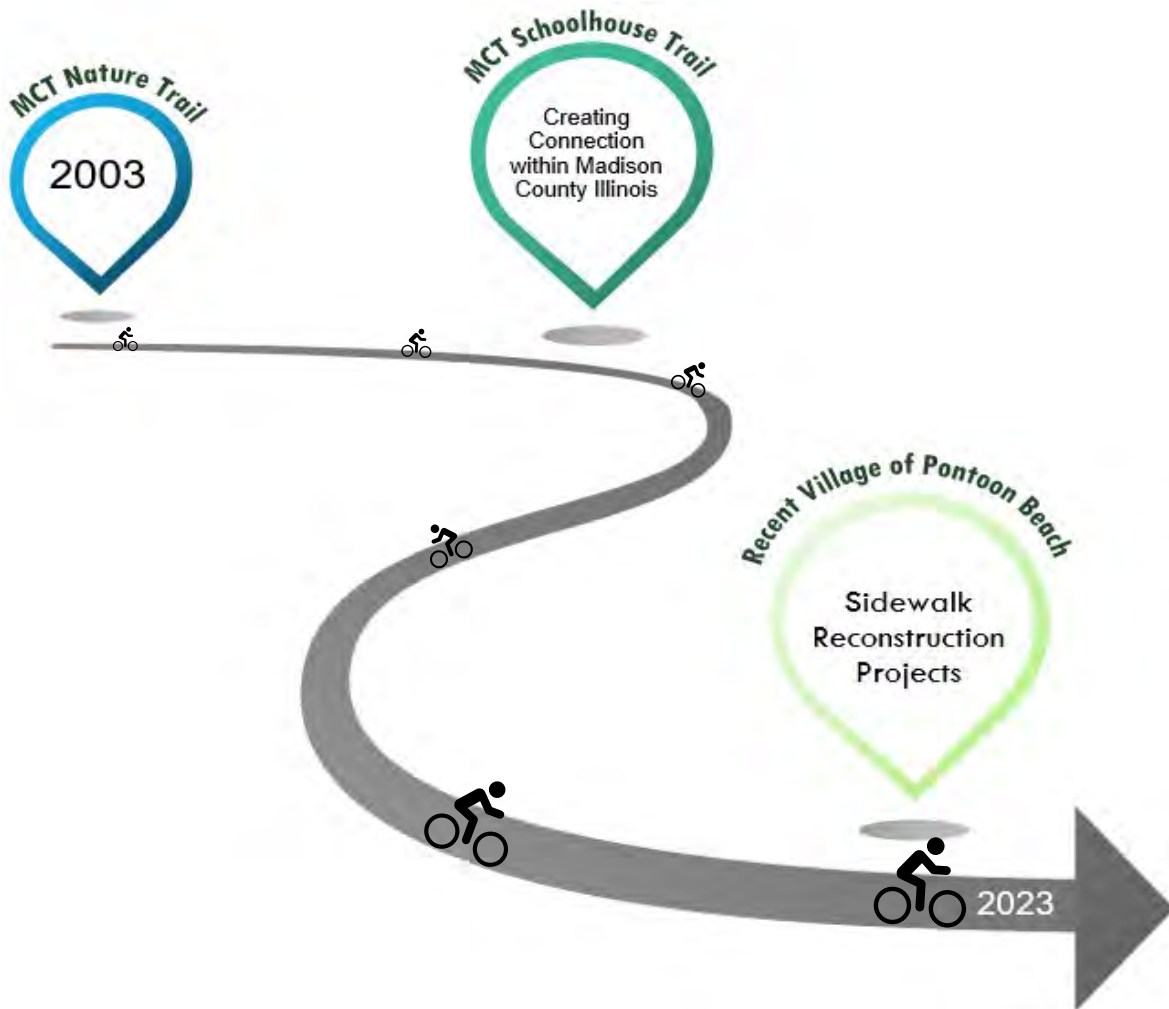
MEPRD constructed the School House Trail along an abandoned Railroad Corridor paralleling Horseshoe Lake Road also known as State Aide 35 and is located within Horseshoe Lake State Park along its Northern Boundary.

As indicated above MCT and MEPRD have been instrumental in providing accessibility of the bikeway system to the residents of the Village of Pontoon Beach. Creating the connection between the MCT Nature Trail/Schoolhouse Trail is instrumental in the overall integration of bikeway systems within Madison County Illinois.



RECENT VILLAGE OF PONTOON BEACH SIDEWALK RECONSTRUCTION PROJECTS

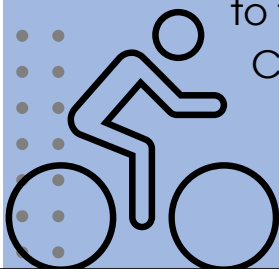
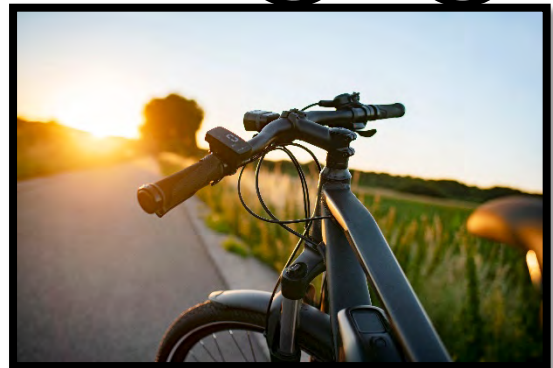
The Village of Pontoon Beach in conjunction with recent funding opportunities have been reconstructing street radius returns and sidewalks to become ADA compliant throughout the corporate boundary of the Village. These improvement projects are important to ensure a safe route for pedestrians of all ages and skill levels to travel within the community.



2.1 Currently Planned Bicycle Facility Upgrades

A Joint-Use Trail Along Lake Drive from Pontoon Road to the MCT Nature Trail

The Village of Pontoon Beach was successful in receiving an ACT Grant through Madison County Transit for the construction of a joint use trail from Pontoon Road Southerly to Oakmont Court. It is the intent of the Village as well as conversations with Madison County Transit that it is important to continue this joint use facility from Oakmont Court to the MCT Nature Trail. This will add a significant number of potential bicycle enthusiasts to the Nature Trail and its continuity with other trails in Madison County.

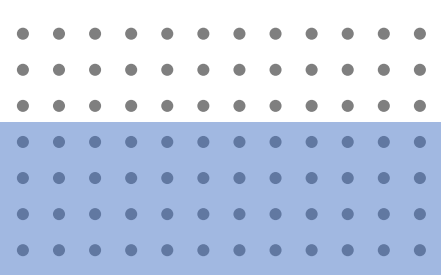
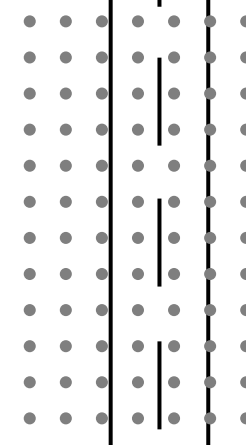


B

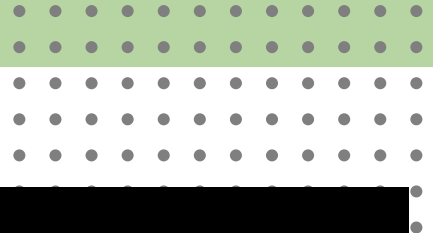
MCT Schoolhouse Trail - Overpass at Illinois Route 111

An overpass is currently under design to carry the MCT S.H.T. over Illinois Route 111 at Horseshoe Lake Road.

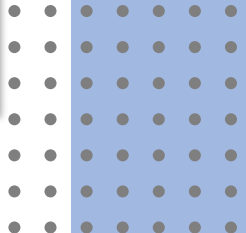




3.1 Madison County Transit District Interconnections

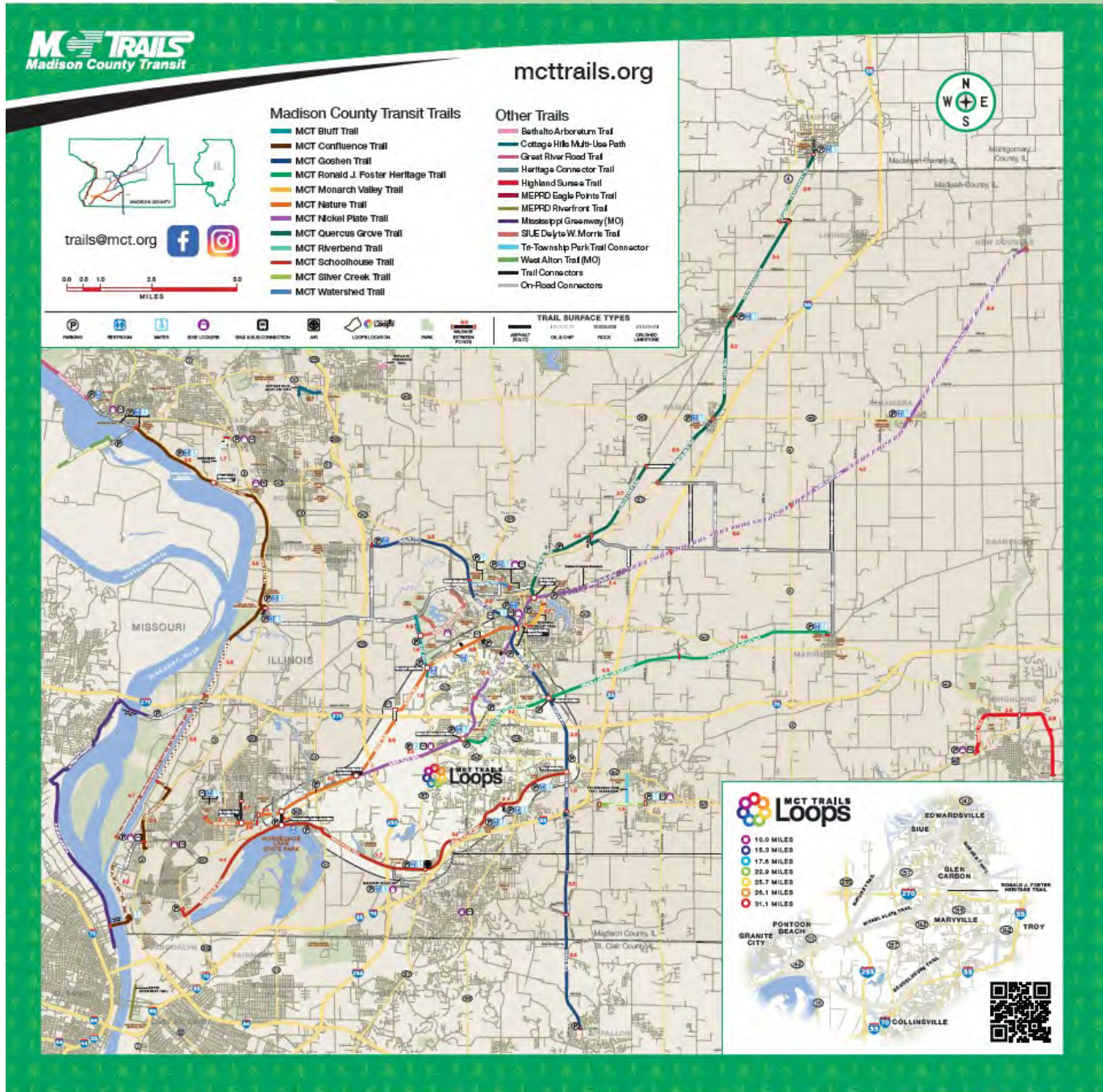


The Village of Pontoon Beach has worked successfully with MCT to provide a bikeway trail system that incorporates a network of Class 1 Trails throughout Madison County. MCT has been highly successful over the years in acquiring abandoned railroad corridors that span more than 135 miles within twenty separate communities. The MCT Trail System form one of the most extensive and interconnected trail networks in the County. This system of trails is instrumental in the development of destination points of interest to bicycle enthusiasts of all ages and skill sets. (Refer to Figure 1 - MCT Trail Map)



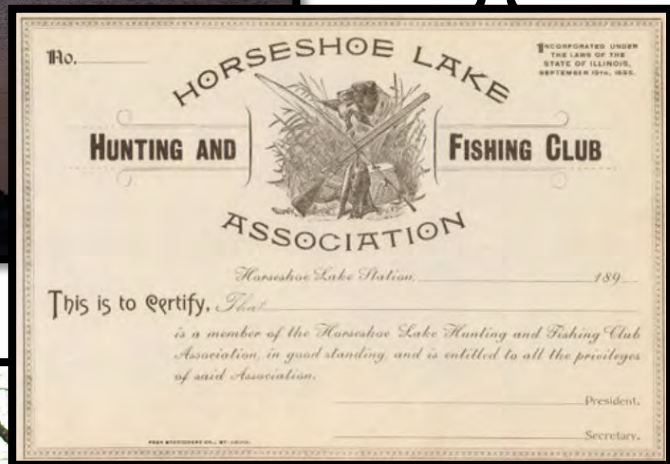
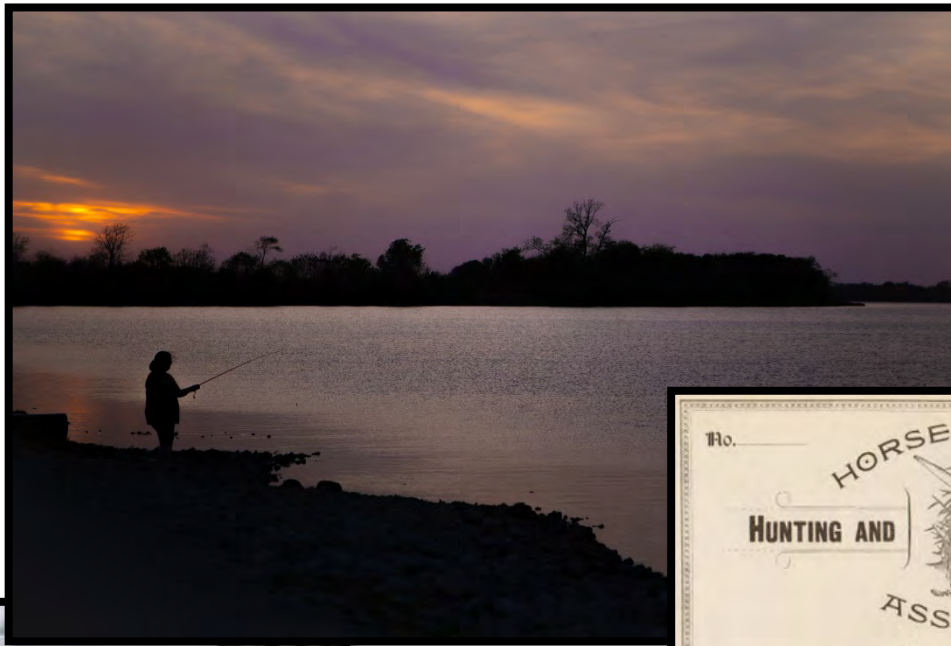
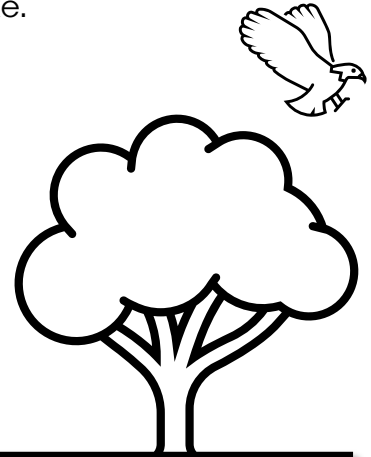
MCT TRAIL MAP

Figure 1

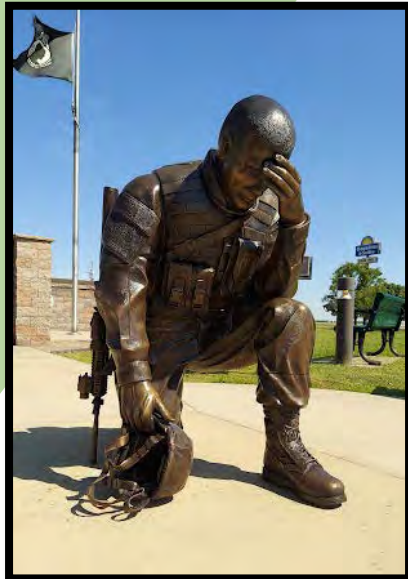


3.2 Horseshoe Lake State Park

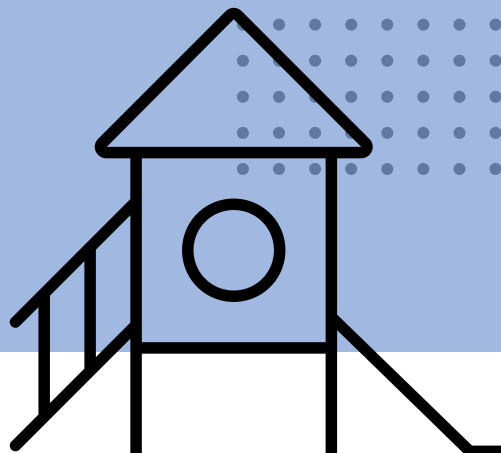
Horseshoe Lake State Park is located off Highway 111 in the southwestern part of Pontoon Beach. With easy access from the Metro East for visitors from throughout the region, the park offers a wide variety of recreational opportunities on 2,960 acres and surrounds a large horseshoe shaped lake called Horseshoe Lake.



3.3 Randall D. Dalton Veterans Memorial Park



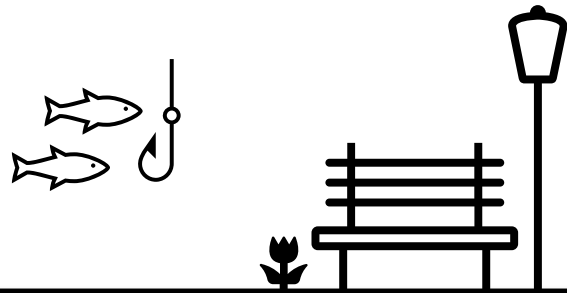
Established in honor of all Veterans, living and deceased, of all wars and conflicts since World War 1. The Park's main features include the Veterans' Monument Flags and 2 Fallen Soldier Statues. In addition, there is a walking trail, 2 pavilions, a small amphitheater, trees, benches BBQ pits and other amenities providing a family- friendly place to enjoy our wonderful community.



3.4 Long Lake Park

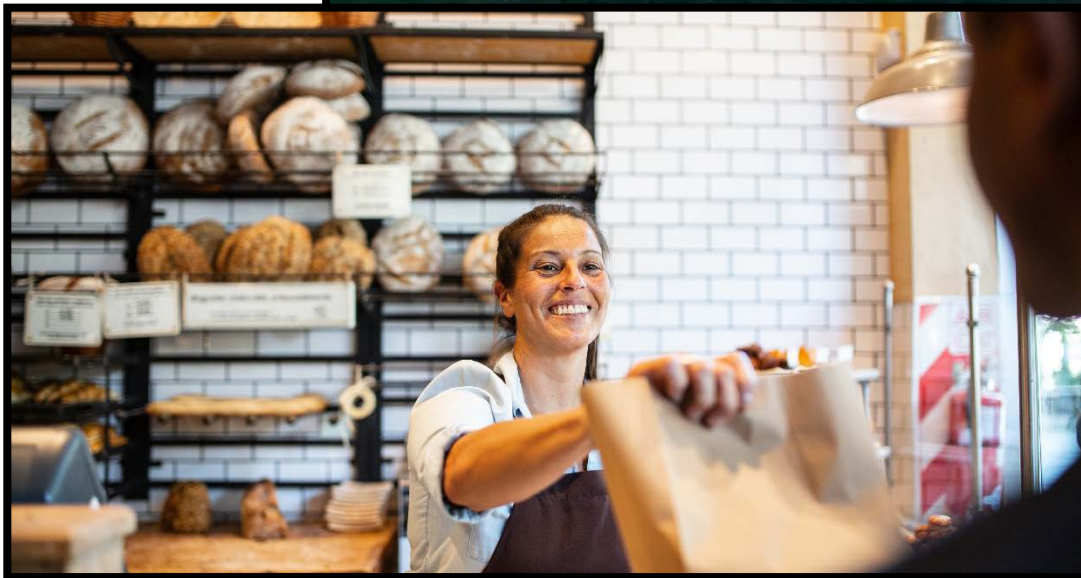
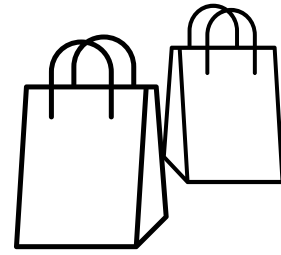


A small community park is an ideal setting where residents, friends, and families can gather and enjoy one another's company in a peaceful setting. Located on Long Lake, across the street from the Long Lake Volunteer Fire Department, there is a pavilion with a BBQ grill and small fishing dock.

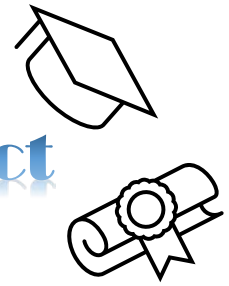


3.5 Retail Centers Within the Corporate Boundary

There currently exists numerous restaurants, entertainment centers, and convenient stores along Pontoon Road. In addition to Creekwood Animal Hospital, gas stations, and a handful of automobile and bicycle shops.



3.6 Granite City School District Education Facilities



The Village of Pontoon Beach is served by the following educational facilities:

The City of Granite City Community School District No.9 (GCSD No.9) operates a series of schools from Pre-K through High School. The schools are located throughout the community at specific destinations. The Granite City School District Mission Statement is the following:

Our district is committed to providing a safe learning environment, which enables all students to develop intellectually, physically, morally, and emotionally to the absolute best of their abilities. This learning environment must offer students the opportunity to practice and adopt the principles, values, and ideals, which will help them to become self-sufficient and effective citizens in today's democratic society. Our goal is to promote learning as a life-long process.

The following schools are identified within the Granite City School District:

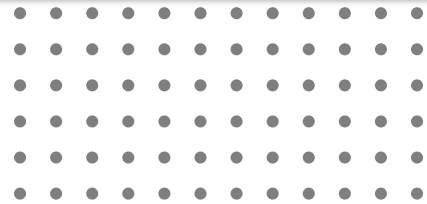
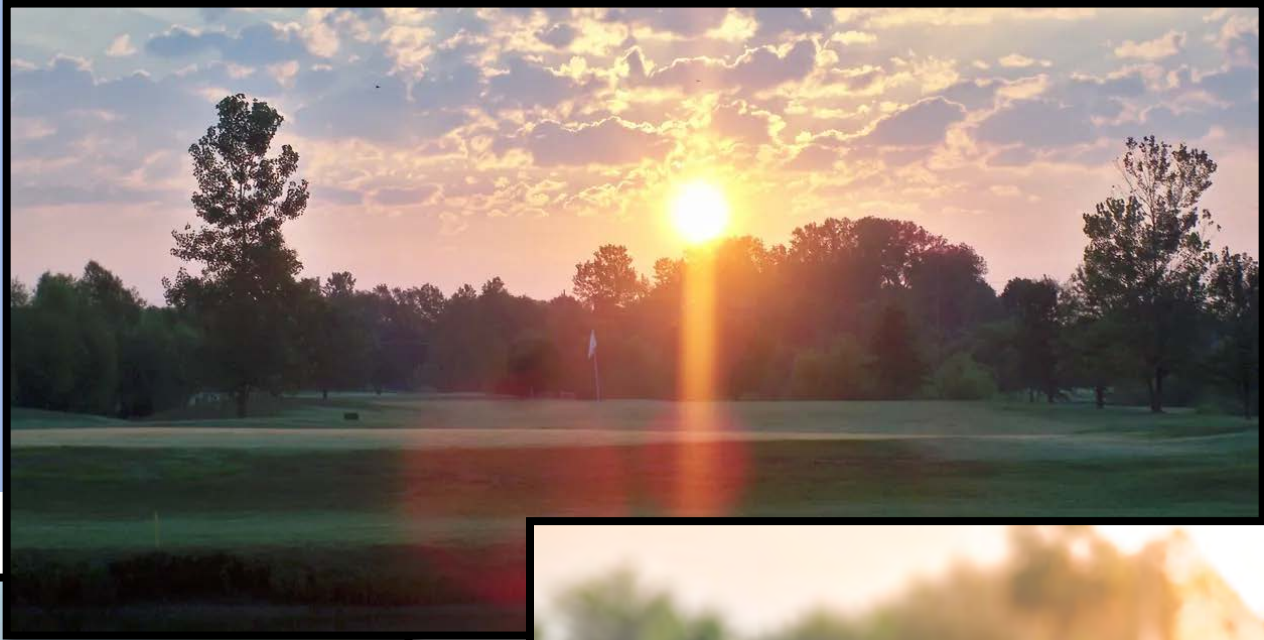
- Granite City High School (9 through 12th)
- Coolidge Junior High School (7th Through 8th)
- Grigsby Intermediate School (5th through 6th)
- Frohardt 3-4 Education Center
- Mitchell 3-4 Education Center
- Maryville 1-2 Education Center
- Wilson 1-2 Education Center
- Prather Pre-K / K Education Center
- Lake Educational Support Services Center
- James Greenwald Administration Building

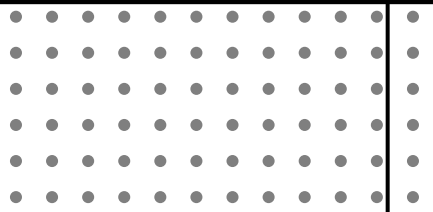
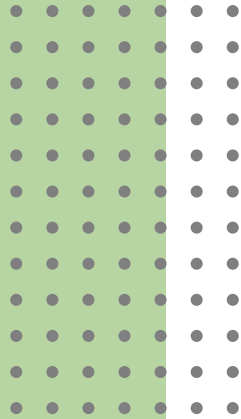
In addition to the Granite City School District Facilities, there are two Parochial Schools, St. Elizabeth Grade School and Holy Family Grade School. There is also a private grade school known as the Metro East Montessori School located along Illinois Route 162 that serves preschool through 6th grade.



3.7 Granite City Legacy Golf Course (18 Hole)

The Granite City Park District also owns and operates Legacy Golf Course which is an 18-hole Golf Course with a strong residential component. This facility is a destination point for the residents and golfers throughout the metropolitan area.





4.1 Evaluation Matrix

During the evaluation of potential projects and the development of a cost to benefit ratio, an evaluation matrix has been developed. This matrix ranks potential projects based on the following seven categories:

- Connection to existing MCT / MEPRD Trail Network
- Destination points within the Village
- Safety Concerns
- Constructability
- Sustainability
- Expansion Opportunities
- Accessibility



(See Figure 2) Evaluation Matrix of Potential Projects

Connection To Existing MCT / MEPRD Trail Network and Destination Points

This Category takes into consideration the existing Class 1 Trails owned and maintained by MCT / MEPRD, which provide continuity within the existing trail system in Madison County.

These Class 1 Trails allow the residents of Pontoon Beach to access Destination Points inside and outside the corporate boundary of the Village. These destination points provide the opportunity for bicyclists and trail enthusiasts to access natural landscapes, prairies, forests, lakes, bluffs, Mississippi River features as well as local community eateries and historical points of interest.

To quantify for the benefits of the proposed trails the following rankings considerations have been considered:

- Termination points of proposed bikeways regarding continuity with existing facilities
- Length of proposed Bikeways
- Synergy/continuity to destination points
- Potential increased usage of existing Class1 Bikeways of MCT / MEPRD



Safety Concerns

Based on the existing pedestrian access and bicycle facilities within the Village it is inevitable that in order to access neighborhoods and potential users, the proposed trails will consist of both on-road and off-road facilities.

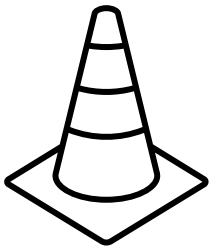
These types of situations create different levels of safety concern. In this regard the evaluation matrix will use the following considerations:

- Class 1 Bicycle Trail Opportunity
- On-street Bikeway
- Joint Use Facilities
- Number of At-Grade Crossings



Constructability

When planning for a new bikeway, consideration must be given to the constructability of the project, therefore, the following considerations should be given:



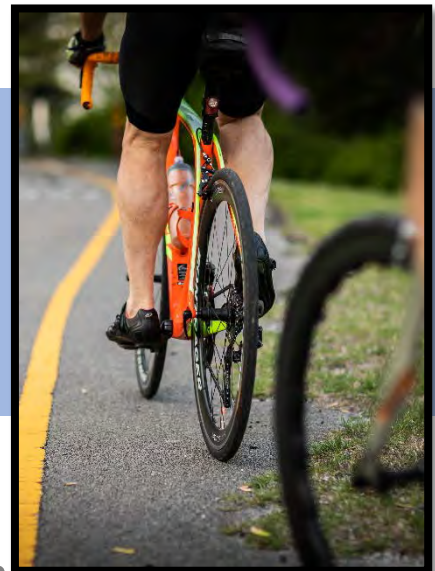
- Permanent right-of-way to be acquired
- Temporary construction easements to be acquired
- Potential environmental considerations, wetlands, flood zone
- Average Daily Traffic Considerations
- Opinion of Probable Construction Costs

Sustainability

Sustainability is defined as the ability to be maintained at a certain level. An additional definition states the avoidance of the depletion of natural resources in order to maintain an ecological balance:

The natural resource point of view has been considered under the constructability aspect. In regard to maintaining the trail, the following issues were considered:

- Materials used in bike trail construction
- Impacts of vehicular traffic to bike trails
- Proximity of adverse features such as drainage considerations and trees
- Underground utility considerations





Expansion Opportunities

Consideration is given if the proposed bike trail can be expanded to create synergy with additional destination points within the Village. Can neighborhoods benefit from the proposed trail location within the community?

Accessibility

The existing topography within the corporate boundary of Village of Pontoon Beach is relatively level terrain, so the impacts associated terrain grades is minimal throughout the Village.

The proposed Bike Trails need to be evaluated by the number of access points and the location of trailheads. These trailheads may be site specific or through the benefit of Destination Point parking and access.

FIGURE NO. 2

EVALUATION MATRIX OF POTENTIAL PROJECTS		Connection to MCT / MEPRD Bikeway	Safety Concerns	Constructability	Sustainability	Expansion Opportunity	Accessibility	Total Score
1	JOINT USE TRAIL ALONG LAKE DRIVE FROM PONTOON ROAD TO MCT NATURE TRAIL	5	5	5	5	5	4	29
2	JOINT USE TRAIL ALONG PONTOON ROAD	4	5	5	4	5	5	28
3	BIKE TRAIL ALONG ILLINOIS ROUTE 111	3	5	4	5	5	3	25
4	BIKE TRAIL CONNECTION WITH EMERALD MEADOWS	5	3	4	4	3	4	23
5	INTERCONNECTION FROM ENGINEERS ROAD TO WEST CHAIN OF ROCKS ROAD	3	5	3	4	3	3	21
6*	ENGINEERS ROAD CONNECTION FROM LAKE DRIVE TO WEST CHAIN OF ROCKS ROAD	3	4	3	3	4	4	21

* - (Tank Town to West Chain of Rocks Requested by Mike Wever)



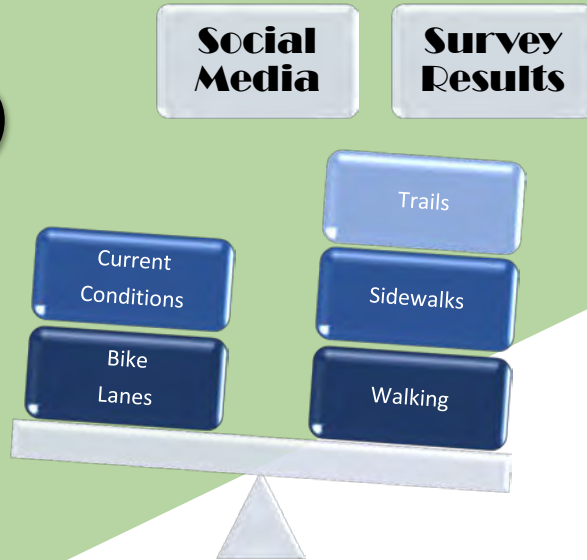
4.2 Evaluation Results

The proposed Bike Trail Segments were evaluated against the developed matrix as described in section 4.1. Each potential project is scored between 1 and 5 for each of the seven (7) categories with a maximum point total of 35. A category ranking of 1 is the lowest a potential Bike Trail Segment can be considered and a potential of 5 is the highest a potential Bike Trail Segment can receive. The highest scoring and complete summary of all Bike Trail Segments are summarized in Figure 2, Evaluation Matrix of Potential Projects.

During the Public Meeting on February 1, 2023, the attendees were asked to rank the top 5 Bikeway Segments as described previously from MOST desirable to LEAST desirable.



5



A social media survey was initiated through the social media site “Survey Monkey” as well as on the Village of Madison and Chamber of Commerce websites. In addition, copies of the survey were available at Village Hall.

Individuals stated that exercise and recreation was their top reason for walking or bicycling. They also indicated that their main destination to walk and bike was within subdivisions. The absence of accessible bike lanes and walking paths, the sense of lack of safety, and weather were factors that prevented them from walking or bicycling within the Village. Finally, if Pontoon Beach were to add more walking or bicycle routes their preference would be access to the regional trail network.

The results of the Bike and Pedestrian Survey, to the average individual, might suggest that there is little to no interest in developing these types of facilities. We believe quite to the contrary. The citizens of Pontoon Beach have great respect for their elected officials and trust in their leadership to plan and develop these routes.

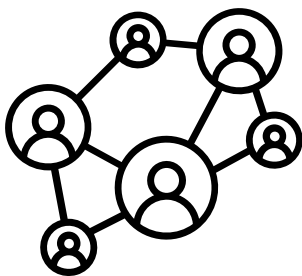
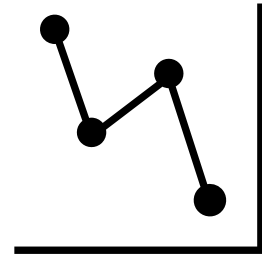
The conclusions of the surveys are summarized in the following section.





Listed below is a summary of the major recommendations from each survey questions.

- The condition of existing Pedestrian facilities in Pontoon Beach is adequate
- Exercise and recreation are the top responses for walking or bicycling
- Bike riders in Pontoon Beach would ride their bikes more often if more bike lanes and safer street facilities were provided
- Subdivisions are the main destinations to walk or bike in the Village
- Absence of accessible bike lanes and walking paths, sense of a lack of safety, and weather are factors that discourage walking and bicycling in the Village
- More connectivity to the existing Trail Network is preferred



7



Future Plans



and



Recommendations

1. FUTURE PLANS AND RECOMMENDATIONS

It is imperative with the continuity of the MCT Trail System that a bike trail be extended along Lake Drive from Pontoon Road to the Nature Trail.

2. JOINT-USE TRAIL TO GRISGBY GRADE SCHOOL

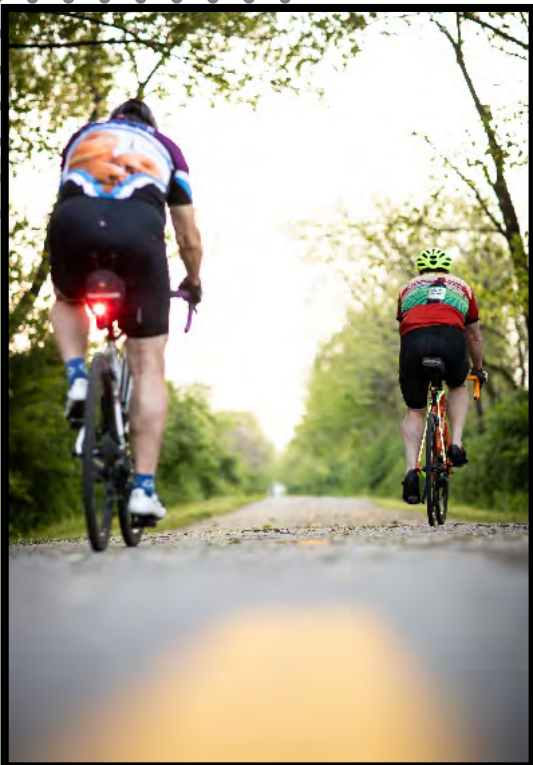
This joint-use trail will provide for continuity between the City of Granite City shared use path at Grigsby School along Cargill Road to the MCT interconnection proposed along Lake Drive.



3. JOINT-USE TRAIL FROM ENGINEER'S ROAD TO WEST CHAIN OF ROCKS ROAD

MCT is currently in design of a shared use path along Chain of Rocks Road. This shared use path is being proposed between the MCT administrative building and Alton and Southern Railroad.

4. CLASS 1 BIKE TRAIL BETWEEN PONTOON ROAD AND ENGINEER'S ROAD ALONG THE EAST SIDE ILLINOIS ROUTE 111





Bicycle and pedestrian improvement projects can be funded through an assortment of local state and federally funded programs. The following are examples of potential funding sources available to the Village:

A. Locally Funded Improvement Projects

The Village has funding which is targeted through Tax Increment Financing (TIF) Districts. These districts are established by the Village to assist in development in documented blighted areas. These districts allow for the increment in taxes between pre-development and post-development periods to be used to help offset capital improvement projects.

Outside of TIF District funding the village can use its General Fund dollars which are based on property tax revenue received within the Village.

B. CMAQ (Congestion Mitigation and Air Quality)



This funding is used to improve air quality and reduce congestion for areas that do not meet the National Ambient Air Quality Standards of which Pontoon Beach is available for CMAQ funding opportunities.

These projects are awarded through a yearly competitive funding round coordinated through East-West Gateway Council of Governments.



C. Community Development Block Grant Funding (MCCD)

These funds are administered on behalf of the Village through Madison County. These funds are slated to be used to benefit Low to Moderate Income Areas and people.

D. Act Funding Administered Through Madison County Community Development

E. Illinois Bicycle Path Grant Program

F. Illinois Transportation Enhancement Program (ITEP)



G. Open Space Lands Acquisition and Development Program and Land and Water Conservation Fund Program (OSLAD & LWCF)

H. Safe Routes to School Program



ACKNOWLEDGEMENTS

The Village of Pontoon Beach would like to thank Metro East Park and Recreation District (MEPRD), along with the Agency for Community Transit (ACT) for providing the funding to develop this Bicycle and Pedestrian Master Plan.

In addition, The Village of Pontoon Beach would like to thank Mike Weaver, a local bicyclist enthusiast, for his personal knowledge of the existing facilities as well as shortcomings, which need to be enhanced.

In addition, a group of local individuals met to provide guidance to the development of the Master Plan. The following individuals met and discussed the existing system and provide guidance moving forward:

MRS. STEPHANIE CANN

MR. MARK MAYNARD

MR. CHRIS MITCHELL

MRS. JENNA DEYONG

MRS. TINA HUBERT

MRS. PAULA HUBBARD

MR. DENNIS WILMSMEYER

MR. DAVID AMES

MR. JUSTIN BRINKMEYER

A Thank you is also extended to the Village of Pontoon Beach's Board of Trustees for their insight and guidance in adopting this Master Planning Document.



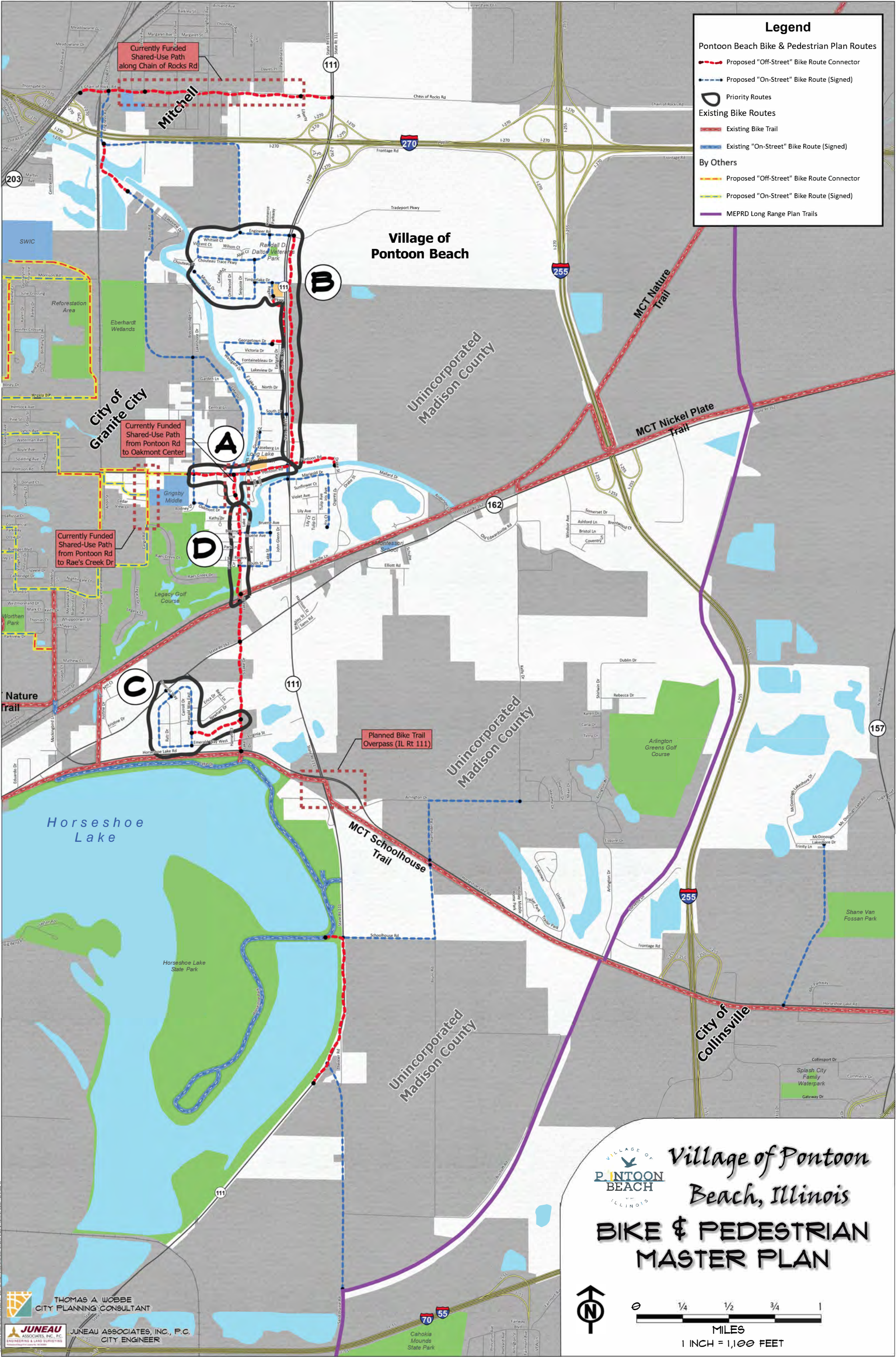
THANK YOU

Appendix A

2023 Bicycle and Pedestrian Master Plan Map with Priority Routes

- A. Joint-Use Trail Along Pontoon Road
- B. Bike Trail along Illinois Route 111
- C. Bike Trail within Emerald Meadows
- D. Joint-Use Trail Along Lake Drive from Pontoon Road to MCT Nature Trail
- E. Interconnection From Engineer's Road to West Chain of Rocks Road





Legend

Pontoon Beach Bike & Pedestrian Plan Routes

- Proposed "Off-Street" Bike Route Connector
- Proposed "On-Street" Bike Route (Signed)
- Priority Routes

Existing Bike Routes

- Existing Bike Trail
- Existing "On-Street" Bike Route (Signed)

By Others

- Proposed "Off-Street" Bike Route Connector
- Proposed "On-Street" Bike Route (Signed)
- MEPRD Long Range Plan Trails

Currently Funded Shared-Use Path along Chain of Rocks Rd

Currently Funded Shared-Use Path from Pontoon Rd to Oakmont Center

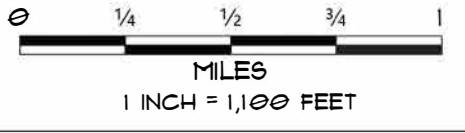
Currently Funded Shared-Use Path from Pontoon Rd to Rae's Creek Dr

Planned Bike Trail Overpass (IL Rt 111)



Village of Pontoon Beach, Illinois

BIKE & PEDESTRIAN MASTER PLAN



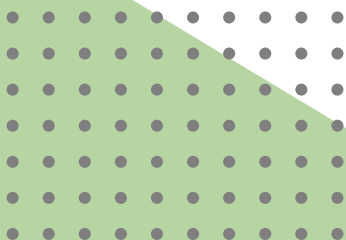
THOMAS A. WOBBE
CITY PLANNING CONSULTANT

JUNEAU ASSOCIATES, INC., P.C.
ENGINEERING & LAND SURVEYING
CITY ENGINEER

Appendix B

Opinions of Probable Construction Costs (Priority Routes)

- A. Joint-Use Trail Along Pontoon Road
- B. Bike Trail along Illinois Route 111
- C. Bike Trail within Emerald Meadows
- D. Joint-Use Trail Along Lake Drive from Pontoon Road to MCT Nature Trail
- E. Interconnection From Engineer's Road to West Chain of Rocks Road



2023 Village of Pontoon Beach Bicycle and Pedestrian Master Plan
Opinions of Probable Construction Costs (Priority Routes)

Priority Route ID	Route ID	Route Segment	Trail Name	Route Description	Trail Type	Length (Feet)	Easement Required	Easement Cost	Construction Type	Construction Cost	Number of Signs	Sign Cost	Advance Warning
A	6	A	East - West Pontoon Rd Connector	Pontoon Rd from Breckenridge Ln to Lake Dr	Side Path	1,194	Yes	\$ 53,730	Typical Bike Trail & Agree	\$ 173,130	5	\$ -	\$ -
A	6	B		Pontoon Rd from Lake Dr to IL Rte 111	Side Path	1,538	Yes	\$ 69,210	Typical Bike Trail & Agree	\$ 223,010	6	\$ -	\$ -
A	8	A		Lake Dr (West side) from Pontoon Rd to Oakmont Cntr (Active Juneau Design)	Side Path	620	Yes	\$ 27,900	Typical Bike Trail & Agree	\$ 89,900	3	\$ -	\$ -
								\$ 150,840		\$ 486,040		\$ -	\$ -
											Route Total	\$ 636,880	

B	2	A	Village Hall & IL Route 111 Corridor	Engineer's Rd from Whitsell Dr to IL Rte 111	Shared Rdwy	1,371		\$ -	On Street	\$ -	4	\$ 1,360	\$ -
B	2	B		Whitsell Dr from Engineer's Rd to Chouteau Trace Pkwy to Engineer's Rd	Shared Rdwy	4,360		\$ -	On Street	\$ -	6	\$ 2,040	\$ -
B	2	C		Mimosa Dr from Chouteau Trace Pkwy to West end Cul-de-sac	Shared Rdwy	3,140		\$ -	On Street	\$ -	5	\$ 1,700	\$ -
B	2	D		Timberlake Dr from Mimosa Dr to IL Rte 111	Shared Rdwy	808		\$ -	On Street	\$ -	3	\$ 1,020	\$ -
B	2	E		Regency Pkwy from Timberlake Pkwy to South Field Spur	Shared Rdwy	873		\$ -	On Street	\$ -	2	\$ 680	\$ -
B	4	A		East side of IL Rte 111 from Tradeport Pkwy to East Pontoon Rd	Side Path	6,571	Yes	\$ 394,260	Typical Bike Trail & Agree	\$ 952,795	3	\$ -	\$ -
								\$ 394,260		\$ 952,795		\$ 6,800	\$ -
											Route Total	\$ 1,353,855	

C	9	A	Emerald Meadows	Emerald Way from IL Rte 162 to Emerald Way East to Emerald Way West	Shared Rdwy	2,489		\$ -	On Street	\$ -	6	\$ 2,040	\$ -
C	9	B		Emerald Way West from Emerald Way to Emerald Way East (South Leg)	Shared Rdwy	2,516		\$ -	On Street	\$ -	3	\$ 1,020	\$ -
C	9	C		Emerald Way East at Madison County Sanitary Sewer Lift Sta (#181) through field to Lake Dr	Shared Use Path	1,521	Yes	\$ 68,445	Typical Bike Trail & Agree	\$ 220,545	2	\$ -	\$ -
								\$ 68,445		\$ 220,545		\$ 3,060	\$ -
											Route Total	\$ 292,050	

2023 Village of Pontoon Beach Bicycle and Pedestrian Master Plan
Opinions of Probable Construction Costs (Priority Routes)

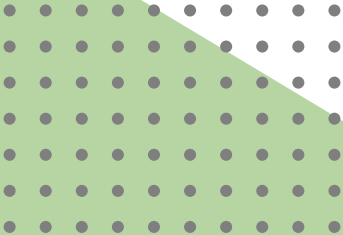
Priority Route ID	Route ID	Route Segment	Trail Name	Route Description	Trail Type	Length (Feet)	Easement Required	Easement Cost	Construction Type	Construction Cost	Number of Signs	Sign Cost	Advance Warning	
D	8	B	Lake Dr	Lake Dr from Oakmont Cntr to Illinois Central Gulf RR Crossing	Side Path	2,962	Yes	\$ 133,290	Typical Bike Trail & Agree	\$ 429,490	6	\$ -	\$ -	
D	8	C		Lake Dr from Illinois Central Gulf RR Crossing to IL Rte 162	Side Path	1,241	Yes	\$ 55,845	Typical Bike Trail & Agree	\$ 170,045	4	\$ -	\$ -	
D	8	D		Lake Dr from IL Rte 162 to Horseshoe Lake Rd	Side Path	3,130	Yes	\$ 140,850	Typical Bike Trail & Agree	\$ 453,850	5	\$ -	\$ -	
								\$ 329,985			\$ 1,063,285			\$ -
											Route Total		\$ 1,393,270	

Kiosks (\$3,500 ea)	2	\$ 7,000
Shared Use Path Totals		\$ 288,990
Side Path Totals		\$ 3,377,205
On Street Route Totals		\$ 9,860
All Routes - Grand Total		\$ 3,683,055

NOTE:
The segments which have been marked out are per discussions with representatives of ACT. These segments are considered as duplication of trail connections within a reasonable distance to an existing trail connection

Appendix C

Meeting Sign in Sheet, Comments, & Public Meeting



Project: Pontoon Beach Master Plan Bicycle Plan Paths

Date: March 6, 2023 @ 4:30 p.m.

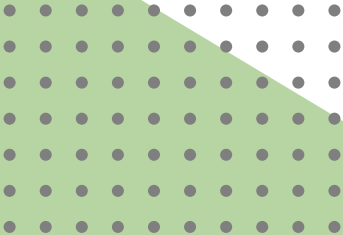
SIGN-IN SHEET

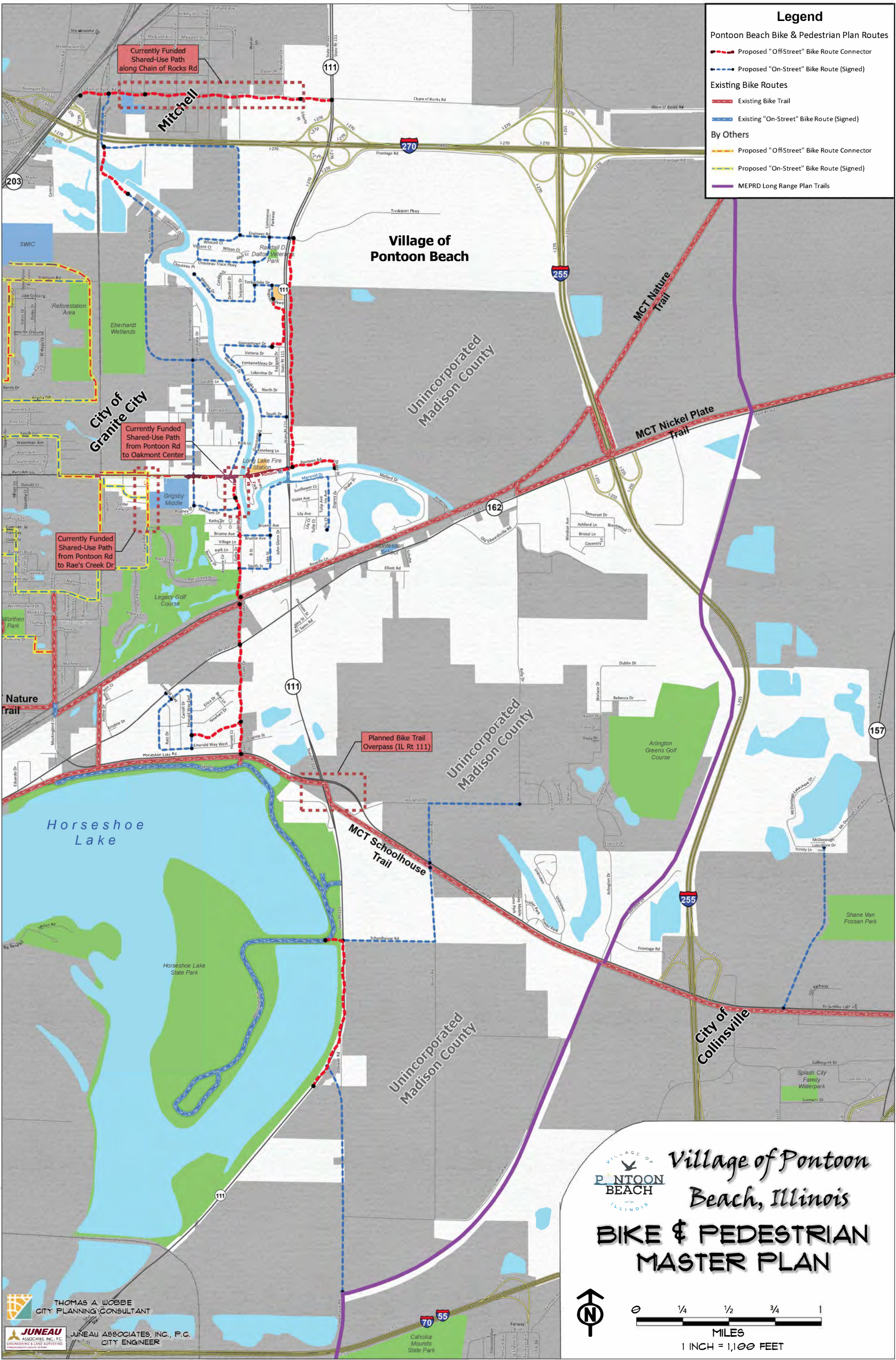
No.	Name	Company Name	Phone	Email
1	Joe Juneau	JAI	(618) 877-1400	jjuneau@jaipc.com
2	Chad Juneau	JAI	(618) 877-1400	chad.juneau@jaipc.com
3	<i>Chief Chris Ambrose Village of Fisher Park</i>			
4				
5	<i>(618) 991-5100</i>			
6				
7				
8				
9				
10				
11				
12				
13				
14				
15				
16				
17				
18				

C.madhusoc.com/bon/bonk
copy

Appendix D

2023 Bicycle and Pedestrian Master Plan Map





Legend

Pontoon Beach Bike & Pedestrian Plan Routes

- Proposed "Off-Street" Bike Route Connector (Red dashed line)
- Proposed "On-Street" Bike Route (Signed) (Blue dashed line)

Existing Bike Routes

- Existing Bike Trail (Red solid line)
- Existing "On-Street" Bike Route (Signed) (Blue solid line)

By Others

- Proposed "Off-Street" Bike Route Connector (Yellow dashed line)
- Proposed "On-Street" Bike Route (Signed) (Green dashed line)
- MEPRD Long Range Plan Trails (Purple solid line)

Currently Funded Shared-Use Path along Chain of Rocks Rd

Currently Funded Shared-Use Path from Pontoon Rd to Oakmont Center

Currently Funded Shared-Use Path from Pontoon Rd to Rae's Creek Dr

Planned Bike Trail Overpass (IL Rt 111)

Village of Pontoon Beach, Illinois

BIKE & PEDESTRIAN MASTER PLAN

THOMAS A. WOBBE
CITY PLANNING CONSULTANT

JUNEAU ASSOCIATES, INC., P.C.
CITY ENGINEER

VILLAGE OF PONTON BEACH ILLINOIS

Village of Pontoon Beach, Illinois

BIKE & PEDESTRIAN MASTER PLAN

Scale: 1 INCH = 1,100 FEET

MILES: 0, 1/4, 1/2, 3/4, 1

North Arrow

THOMAS A. WOBBE
CITY PLANNING CONSULTANT

JUNEAU ASSOCIATES, INC., P.C.
CITY ENGINEER

Appendix E

2023 Bicycle and Pedestrian Master Plan Segment Map





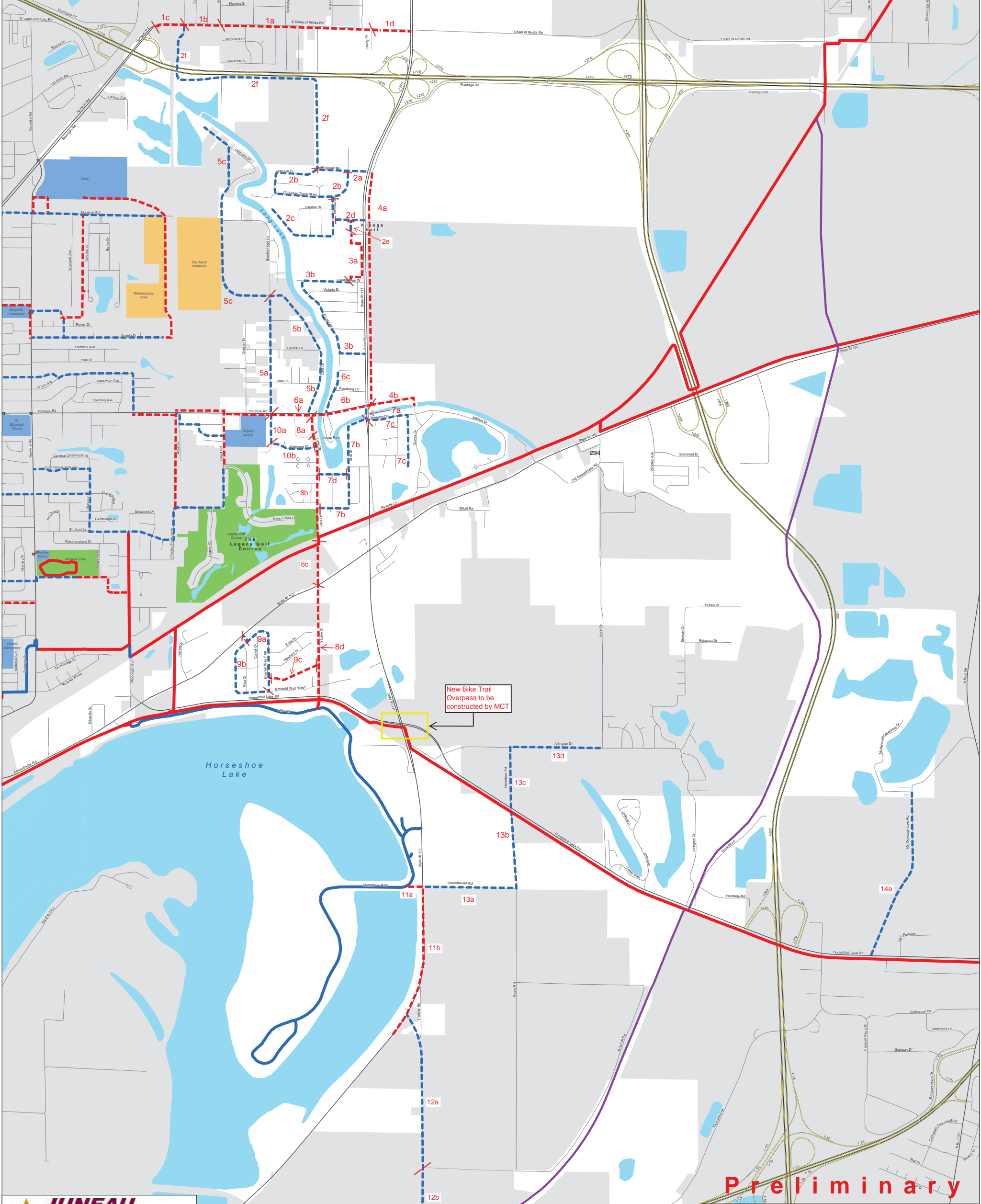
Pontoon Beach
A Community of New Beginnings

1 Regency Parkway
Pontoon Beach, Illinois 62040

Mayor - Mike Pagano
Zoning Administrator - Bob Barthelemy


Legend

- MEPRD Long Range Plan Trails
- Existing Bike Trail
- Existing "On-Street" Bike Route (Signed)
- Proposed "Off-Street" Bike Route Connector
- Proposed "On-Street" Bike Route (Signed)
- ◆ Pedestrian
- ◆ Traffic_Signals



New Bike Trail Overpass to be constructed by MCT

Preliminary



JUNEAU ASSOCIATES, INC., P.C.
ENGINEERING & LAND SURVEYING

Map Document: Pontoon Beach Bike & Pedestrian Plan Map
Date Published: 1/18/2023
Date of Last Update: 7/11/2022
Data Source: Village of Pontoon Beach, Madison County GIS Data, Juneau Associates, Inc., P.C.

Village of Pontoon Beach, Illinois Bike Plan Map Disclaimer: While the Village of Pontoon Beach, Illinois makes every effort to maintain and distribute accurate information, no warranties are made regarding the accuracy or completeness of the information displayed on this publication. This publication is intended for general informational use only and does not represent a legal record. Users of this publication shall hold the Village of Pontoon Beach, Illinois and Juneau Associates, Inc., P.C. harmless in all matters and accounts arising from the use and/or accuracy of this publication and/or data.



Village Website: www.pontoon-beach.org
Village Ordinance: On file at Village Hall

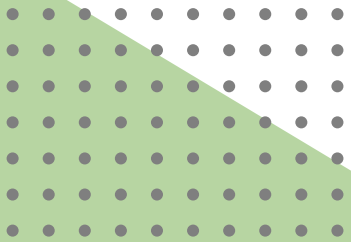
Bike & Pedestrian Master Plan

Village of Pontoon Beach, Illinois

Appendix F

Opinions of Probable Construction Cost (All Routes)

1. Route Segment Details and Estimated Cost
2. Master Plan Signage
 - A. Sign Legend
 - B. Signs (White and Green)



2023 Village of Pontoon Beach Bicycle and Pedestrian Master Plan
Route Segment Details and Probable Construction Costs

Route ID	Route Segment	Priority Route ID	Trail Name	Route Description	Trail Type	Length (Feet)	Easement Required	Easement Cost	Construction Type	Construction Cost	Number of Signs	Sign Cost	Advance Warning
1	A		East Chain of Rocks Rd Shared Use Path	East Chain of Rocks Rd from Mitchell Elementary School to Liberty Pl (Active Juneau Design)	Side Path	4,830	Yes	\$ 217,350	Typical Bike Trail & Agree	\$ 700,350	2	\$ -	\$ -
	B			East Chain of Rocks Rd from Mitchell Elementary School to Engineer's Rd	Side Path	680	Yes	\$ 30,600	Typical Bike Trail & Agree	\$ 98,600	1	\$ -	\$ -
	C			East Chain of Rocks Rd from Engineer's Rd to Nameoki Rd	Side Path	1,184	Yes	\$ 53,280	Typical Bike Trail & Agree	\$ 171,680	3	\$ -	\$ -
	D			East Chain of Rocks Rd from Liberty Pl to IL Rte 111	Side Path	975	Yes	\$ 43,875	Typical Bike Trail & Agree	\$ 141,375	2	\$ -	\$ -
								\$ 345,105		\$ 1,112,005		\$ -	\$ -
											Route Total	\$ 1,457,110	

2	A	B	East Chain of Rocks Rd to Village Hall	Engineer's Rd from Whitsell Dr to IL Rte 111	Shared Rdwy	1,371		\$ -	On Street	\$ -	4	\$ 1,360	\$ -
	B	B		Whitsell Dr from Engineer's Rd to Chouteau Trace Pkwy to Engineer's Rd	Shared Rdwy	4,360		\$ -	On Street	\$ -	6	\$ 2,040	\$ -
	C	B		Mimosa Dr from Chouteau Trace Pkwy to West end Cul-de-sac	Shared Rdwy	3,140		\$ -	On Street	\$ -	5	\$ 1,700	\$ -
	D	B		Timberlake Dr from Mimosa Dr to IL Rte 111	Shared Rdwy	808		\$ -	On Street	\$ -	3	\$ 1,020	\$ -
	E	B		Regency Pkwy from Timberlake Pkwy to South Field Spur	Shared Rdwy	873		\$ -	On Street	\$ -	2	\$ 680	\$ -
	F			Engineer's Rd from East Chain of Rocks Rd to Whitsell Dr	Shared Rdwy	7,951		\$ -	On Street	\$ -	4	\$ 1,360	\$ -
								\$ -		\$ -		\$ 8,160	\$ -
											Route Total	\$ 8,160	

3	A		Lakeview to Village Hall	From Regency Pkwy South Spur through field to Georgetown Dr (#7) ±380' from IL Rte 111	Shared Use Path	1,840	Yes	\$ 82,800	Typical Bike Trail & Agree	\$ 266,800	2	\$ -	\$ -
	B			Georgetown Dr (#7) to East Lake Dr to South Rd to IL Rte 111	Shared Rdwy	4,415		\$ -	On Street	\$ -	7	\$ 2,380	\$ -
								\$ 82,800		\$ 266,800		\$ 2,380	\$ -
											Route Total	\$ 351,980	

2023 Village of Pontoon Beach Bicycle and Pedestrian Master Plan
Route Segment Details and Probable Construction Costs

Route ID	Route Segment	Priority Route ID	Trail Name	Route Description	Trail Type	Length (Feet)	Easement Required	Easement Cost	Construction Type	Construction Cost	Number of Signs	Sign Cost	Advance Warning	
4	A	B	IL Route 111 Corridor	East side of IL Rte 111 from Tradeport Pkwy to East Pontoon Rd	Side Path	6,571	Yes	\$ 394,260	Typical Bike Trail & Agree	\$ 952,795	3	\$ -	\$ -	
	B			South side of E Pontoon Rd from IL Rte 111 to Drake Ave	Side Path	1,536	Yes	\$ 69,120	Typical Bike Trail & Agree	\$ 222,720	3	\$ -	\$ -	
								\$ 463,380			\$ 1,175,515			\$ - \$ -
												Route Total	\$ 1,638,895	
5	A		Long Lake West Side	Breckenridge Ln from Pontoon Rd to Lake Dr	Shared Rdwy	3,301		\$ -	On Street	\$ -	3	\$ 1,020	\$ -	
	B			Lake Dr from Pontoon Rd to Breckenridge Ln/Lakeview Dr	Shared Rdwy	4,089		\$ -	On Street	\$ -	3	\$ 1,020	\$ -	
	C			Lakeview Dr from Lake Dr/Breckenridge Ln to Rapp Rd to Lakeview Dr to North end of Lakeview Dr	Shared Rdwy	6,159		\$ -	On Street	\$ -	5	\$ 1,700	\$ -	
								\$ -			\$ -			\$ 3,740 \$ -
												Route Total	\$ 3,740	
6	A	A	East - West Pontoon Rd Connector	Pontoon Rd from Breckenridge Ln to Lake Dr	Side Path	1,194	Yes	\$ 53,730	Typical Bike Trail & Agree	\$ 173,130	5	\$ -	\$ -	
	B	A		Pontoon Rd from Lake Dr to IL Rte 111	Side Path	1,538	Yes	\$ 69,210	Typical Bike Trail & Agree	\$ 223,010	6	\$ -	\$ -	
	C			Kaseberg Ln from Pontoon Rd to Gemstone Dr to Easterly bend	Shared Rdwy	1,233		\$ -	On Street	\$ -	2	\$ 680	\$ -	
								\$ 122,940			\$ 396,140			\$ 680 \$ -
												Route Total	\$ 519,760	
7	A		Lake Dr Southeast Connector	IL Rte 203 SB shoulder from Pontoon Rd to Lake St	Shared Rdwy	390		\$ -	On Street	\$ -	2	\$ 680	\$ 1,500	
	B			Lake St from Pontoon Rd to South St to Lake Dr	Shared Rdwy	3,715		\$ -	On Street	\$ -	4	\$ 1,360	\$ -	
	C			Marigold Dr from IL Rte 111 to Iris Dr to Sout End Cul-de-sac	Shared Rdwy	2,654		\$ -	On Street	\$ -	5	\$ 1,700	\$ -	
	D			Bruene Ave from Lake Dr to Lake St	Shared Rdwy	836		\$ -	On Street	\$ -	2	\$ 680	\$ -	
								\$ -			\$ -			\$ 4,420 \$ 1,500
												Route Total	\$ 5,920	

**2023 Village of Pontoon Beach Bicycle and Pedestrian Master Plan
Route Segment Details and Probable Construction Costs**

Route ID	Route Segment	Priority Route ID	Trail Name	Route Description	Trail Type	Length (Feet)	Easement Required	Easement Cost	Construction Type	Construction Cost	Number of Signs	Sign Cost	Advance Warning
8	A	A	Pontoon Rd to Horseshoe Lake	Lake Dr (West side) from Pontoon Rd to Oakmont Cntr (Active Juneau Design)	Side Path	620	Yes	\$ 27,900	Typical Bike Trail & Agree	\$ 89,900	3	\$ -	\$ -
	B	D		Lake Dr from Oakmont Cntr to Illinois Central Gulf RR Crossing	Side Path	2,962	Yes	\$ 133,290	Typical Bike Trail & Agree	\$ 429,490	6	\$ -	\$ -
	C	D		Lake Dr from Illinois Central Gulf RR Crossing to IL Rte 162	Side Path	1,241	Yes	\$ 55,845	Typical Bike Trail & Agree	\$ 179,945	4	\$ -	\$ -
	D	D		Lake Dr from IL Rte 162 to Horseshoe Lake Rd	Side Path	3,130	Yes	\$ 140,850	Typical Bike Trail & Agree	\$ 453,850	5	\$ -	\$ -
								\$ 357,885		\$ 1,153,185		\$ -	\$ -
												Route Total	\$ 1,511,070
9	A	C	Emerald Meadows	Emerald Way from IL Rte 162 to Emerald Way East to Emerald Way West	Shared Rdwy	2,489		\$ -	On Street	\$ -	6	\$ 2,040	\$ -
	B	C		Emerald Way West from Emerald Way to Emerald Way East (South Leg)	Shared Rdwy	2,516		\$ -	On Street	\$ -	3	\$ 1,020	\$ -
	C	C		Emerald Way East at Madison County Sanitary Sewer Lift Sta (#181) through field to Lake Dr	Side Path	1,521	Yes	\$ 68,445	Typical Bike Trail & Agree	\$ 220,545	2	\$ -	\$ -
								\$ 68,445		\$ 220,545		\$ 3,060	\$ -
												Route Total	\$ 292,050
10	A		Oakmont	Gaslight Way from Pontoon Rd to Oakmont Dr	Shared Rdwy	867		\$ -	On Street	\$ -	2	\$ 680	\$ -
	B			Oakmont Dr from Gaslight Way to Lake Dr (805' is Private Dr)	Shared Rdwy	1,135		\$ -	On Street with Agreement	\$ -	2	\$ 680	\$ -
								\$ -		\$ -		\$ 1,360	\$ -
												Route Total	\$ 1,360
11	A		Horseshoe Lake & IL Rte 111	IL Route 111 @ Schoolhouse Rd to Horseshoe Park Rd	Shared Use Path	564	Yes	\$ 25,380	Typical Bike Trail & Agree	\$ 81,780	2	\$ -	\$ -
	B			IL Route 111 from Schoolhouse Rd to Horseshoe Lake State Park Boat Ramp Access Rd	Side Path	4,986	Yes	\$ 224,370	Typical Bike Trail & Agree	\$ 722,970	5	\$ -	\$ -
								\$ 249,750		\$ 804,750		\$ -	\$ -
												Route Total	\$ 1,054,500

2023 Village of Pontoon Beach Bicycle and Pedestrian Master Plan
Route Segment Details and Probable Construction Costs

Route ID	Route Segment	Priority Route ID	Trail Name	Route Description	Trail Type	Length (Feet)	Easement Required	Easement Cost	Construction Type	Construction Cost	Number of Signs	Sign Cost	Advance Warning
12	A		Sand Prairie Lane	Sand Prairie Ln from IL Route 111 to Bischoff Rd	Shared Rdwy	4,356		\$ -	On Street	\$ -	1	\$ 340	\$ -
	B			Sand Prairie Ln from Bischoff Rd to Canteen Creek Structure	Shared Rdwy	2,350		\$ -	On Street	\$ -	2	\$ 680	\$ -
								\$ -		\$ -		\$ 1,020	\$ -
												Route Total	\$ 1,020

13	A		Arlington to Horseshoe Lake	Schoolhouse Rd from IL Route 111 to Bruns Rd	Shared Rdwy	2,644		\$ -	On Street	\$ -	2	\$ 680	\$ -
	B			Bruns Rd from Schoolhouse Rd to Horseshoe Lake Rd	Shared Rdwy	2,255		\$ -	On Street	\$ -	3	\$ 1,020	\$ -
	C			Hanfelder Rd from Horseshoe Lake Rd to Arlington Dr	Shared Rdwy	1,690		\$ -	On Street	\$ -	3	\$ 1,020	\$ -
	D			Arlington Dr from Hanfelder Rd to Kelly Dr	Shared Rdwy	2,584		\$ -	On Street	\$ -	3	\$ 1,020	\$ -
								\$ -		\$ -		\$ 3,740	\$ -
												Route Total	\$ 3,740

14	A		McDonough Lake	McDonough Lake Rd from Horseshoe Lake Rd to Trinity Ln	Shared Rdwy	4,873		\$ -	On Street	\$ -	5	\$ 1,700	\$ -
								\$ -		\$ -		\$ 1,700	\$ -
												Route Total	\$ 1,700

Kiosks (\$3,500 ea)	2	\$ 7,000
Shared Use Path Totals		\$ 456,760
Side Path Totals		\$ 6,362,485
On Street Route Totals		\$ 24,760
All Routes - Grand Total		\$ 6,851,005

APPENDIX F.2

MASTER PLAN SIGNAGE

SIGN LEGEND

- (1) D11-1(24X18) & M4-6(12x9)
- (2) D11-1(24X18) & M5-1L(12X9)
- (3) D11-1(24X18) & M5-1R(12X9)
- (4) D11-1(24X18) & M6-6L(12X9)
- (5) D11-1(24X18) & M6-6R(12X9)
- (6) D11-1(24X18) & M6-4(12X9)
- (7) D11-1(24X18) & M6-3(12X9)
- (8) D11-1(24X18) & M6-1L(12X9)
- (9) D11-1(24X18) & M6-1R(12X9)
- (10) D11-1(24X18) & M6-2L(12X9)
- (11) D11-1(24X18) & M6-2R(12X9)
- (12) D11-1(24X18) & M5-2L(12X9)
- (13) D11-1(24X18) & M5-2R(12X9)
- (14) D11-1(24X18) & M6-7L(12X9)
- (15) D11-1(24X18) & M6-7R(12X9)
- (16) D11-1(24X18) & M6 5L(12X9)
- (17) D11-1(24X18) & M6-5R(12X9)
- (18) D11-1(24X18) & M6-3(12X9)
& M6-4(12X9)
- (19) D11-1(24X18) & M6-7L(12X9)
& M6-7R(12X9)
- (20) D11-1(24X18) & M6-2L(12X9)
& M6-2R(12X9)
- (21) D11-1(24X18) & M6-1(12X9)
& M6-2R(12X9)

1



D11-1 (24x18)



M4-6 (12x6)

2



D11-1 (24x18)



M5-1L (12x9)

3



D11-1 (24x18)



M5-1R (12x9)

4



D11-1 (24x18)



M6-6L (12x9)

5



D11-1 (24x18)



M6-6R (12x9)

6



D11-1 (24x18)



M6-4 (12x9)

7



D11-1 (24x18)



M6-3 (12x9)

8



D11-1 (24x18)



M6-1 (12x9)

9



D11-1 (24x18)



M6-1 (12x9)

10



D11-1 (24x18)



M6-2L (12x9)

11



D11-1 (24x18)



M6-2R (12x9)



12



D11-1 (24x18)



M5-2L (12x9)

13



D11-1 (24x18)



M5-2R (12x9)

14



D11-1 (24x18)



M6-7L (12x9)

15



D11-1 (24x18)



M6-7R (12x9)

16



D11-1 (24x18)



M6-5L (12x9)

17



D11-1 (24x18)



M6-5R (12x9)

18



D11-1 (24x18)



M6-3 (12x9)



M6-4 (12x9)

19



D11-1 (24x18)



M6-7L (12x9)



M6-7R (12x9)

20



D11-1 (24x18)



M6-2L (12x9)



M6-2R (12x9)

21



D11-1 (24x18)



M6-2L (12x9)



M6-1 (12x9)



W11-1 (30x30)



W16-1P (18x24)



W11-2 (30x30)



W16-7PL (24x12)



W16-7PR (24x12)

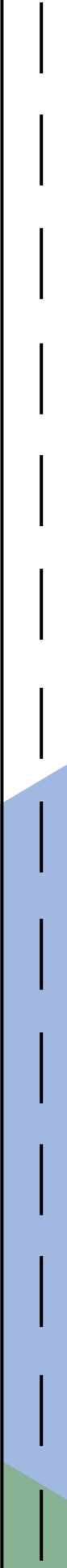


HW11-1P (24x18)



Appendix G

Village of Pontoon Beach Resolution



Original

RESOLUTION NO. 23-019

A RESOLUTION TO APPROVE THE VILLAGE OF PONTOON BEACH BICYCLE AND PEDESTRIAN MASTER PLAN

WHEREAS, The Village of Pontoon Beach, Illinois (the “Village”) passed a Resolution on May 24, 2022 authorizing the development of a Master Bicycle Facility Plan; and

WHEREAS, The Village of Pontoon Beach, Illinois passed a Resolution on May 24, 2022 authorizing the execution of a professional engineering services agreement with Juneau & Associates to develop a Master Bicycle Facility Plan; and

WHEREAS, Juneau & Associates has prepared the attached Bicycle and Pedestrian Master Plan for the Village.

WHEREAS, the Village Trustees of the Village of Pontoon Beach hereby finds that the attached Bicycle and Pedestrian Master Plan for the Village will promote the public good.

NOW THEREFORE, BE IT RESOLVED BY THE PRESIDENT AND BOARD OF TRUSTEES OF THE VILLAGE OF PONTOON BEACH, ILLINOIS, AS FOLLOWS:

SECTION 1: The attached Bicycle and Pedestrian Master Plan for the Village is hereby approved.

SECTION 2: This Resolution shall be in effect following its passage, approval and publication as provided by law.

SECTION 3: Any and all Resolutions, sections or subsections of Resolutions in conflict herewith are hereby repealed.

PASSED this 13th day of June, 2023.

Name	Voting in Favor	Voting Against	Not Voting
Steve Freese - Trustee	X		
Terry Kreher - Trustee	A		
Linda McFarland - Trustee	X		
Kelly Rogers - Trustee	A		
Christie Vivod - Trustee	A		
Bret Ware - Trustee	X		
Mike Pagano - Mayor			

APPROVED this 13th day of June, 2023.

MIKE PAGANO, PRESIDENT
Village of Pontoon Beach, Illinois

ATTEST:

HARLON D. KEEL, VILLAGE CLERK
Village of Pontoon Beach, Illinois

